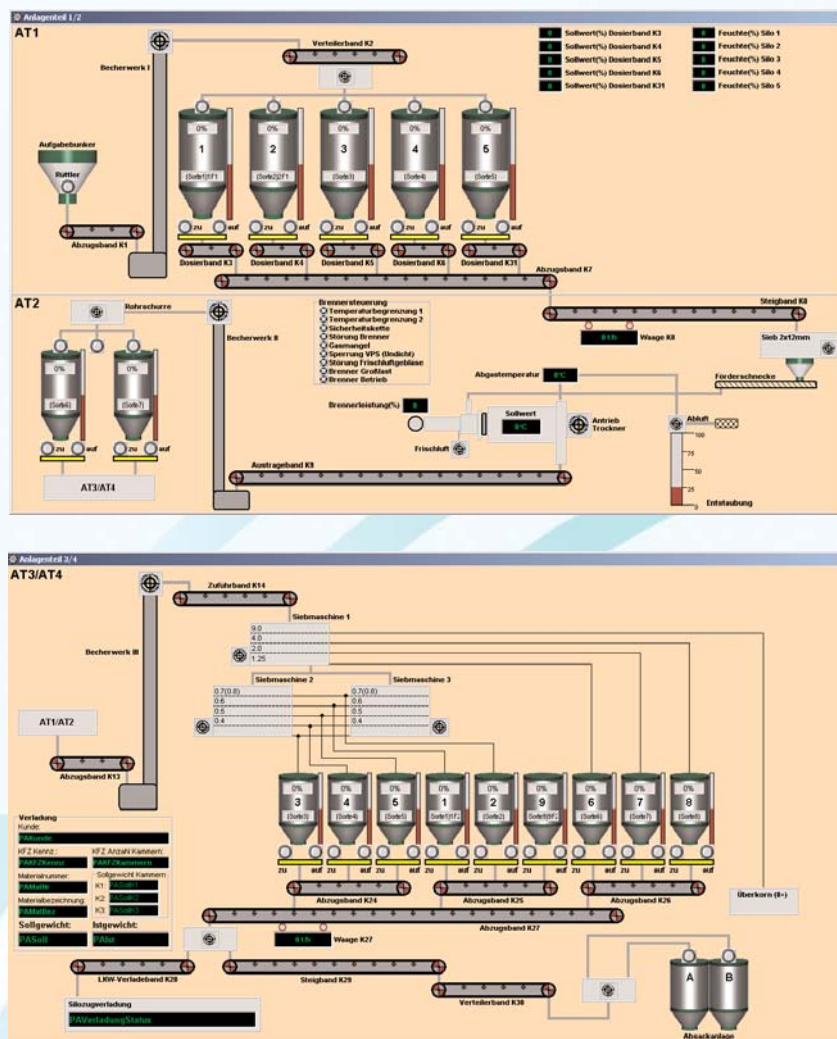




# KSA

Process control system  
for aggregate conditioning and loading plants



**KSA** is a modular system for the manual and automatic control of the processes in the gravel plant. It consists of the administration software **KSA-DV** and the plant visualisation **KSA-VISU**. Thanks to its modular structure, **KSA** allows to create a plant control which is tailored to your specific needs. For this, only the hardware and software modules necessary for your production process will be compiled.

# Plant visualisation KSA-VISU

The visualisation and operation of the plant is realised by an individually adjusted process visualisation. During operation, the visualisation shows a schematic outline of the plant. All relevant operating procedures and plant statuses as well as exact error messages in cleartext with time and date are displayed graphically. Thanks to the modular structure of the KSA system, it is possible to retrofit or change plant components at any time.

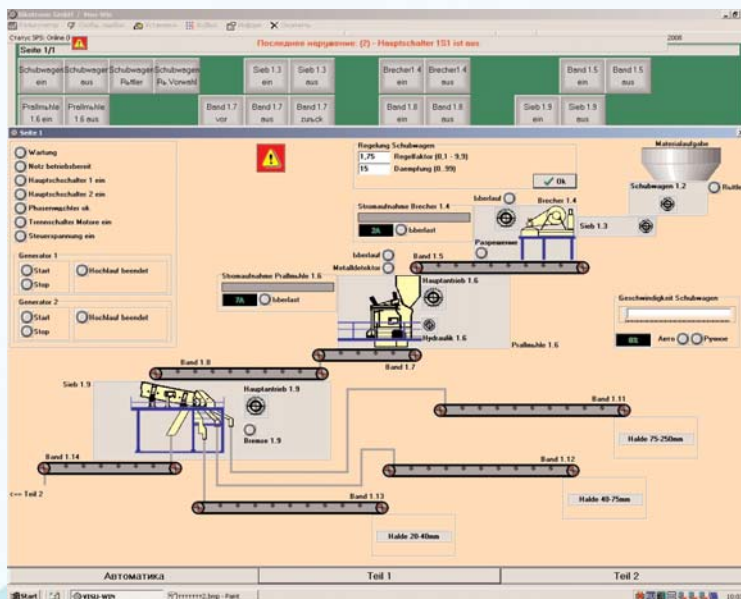
KSA-VISU has an integrated maintenance module for controlling and recording all maintenance intervals.

Each emergency and rip cord switch is displayed separately. If it is active, the corresponding lamp is blinking and an error message will appear. All error messages are saved in a data file and can be arranged in any order for later check-up.

- Easy operation of the plant
- Output of error messages
- Individually adjustable control times
- Counter for operating hours for all drives

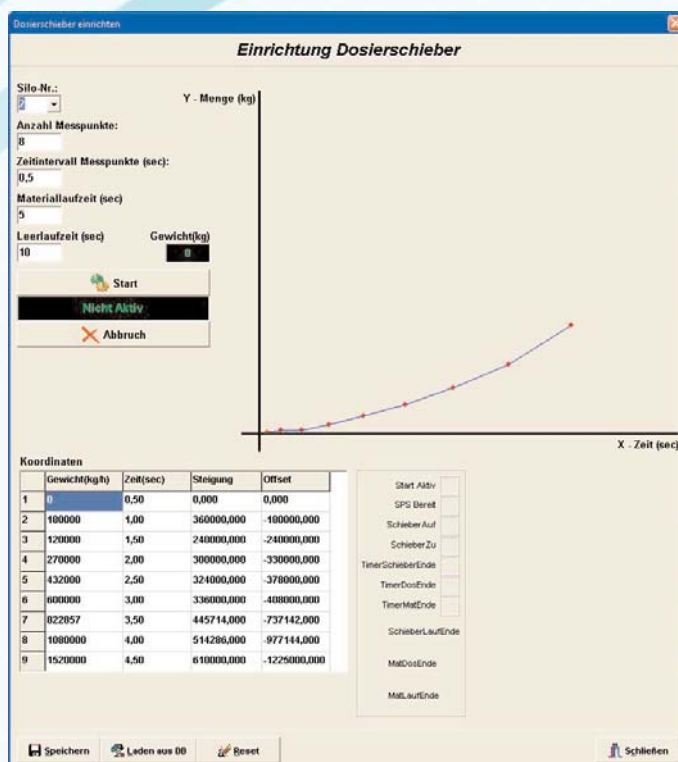
## Maintenance module

- Each motor, each valve and each limit switch can be supervised. If a previously defined condition is fulfilled, a message in cleartext will appear which is stored in a file for later processing.
- Operating time  
For example: Change the gear oil of the crusher after 500 operating hours. The current operating time is constantly displayed.
- Switching cycles  
For example: Retighten the screws after 200 switching cycles. The current number of switching cycles is constantly displayed.
- One-time message: e.g. full status signal silo;  
time periodical: e.g. biweekly;  
time absolute: e.g. 18 June 2013



## Automatic setup for the adjustable dosing flap

- The flap will be opened with the start button after entering the number of measuring points and the time intervals with material flow time. The material flow is measured on the belt weigher and the dosing curve of the dosing flaps will be automatically created and saved.
- The specific measuring results are displayed tabularly and graphically.
- The automatic setup for the dosing flaps can be repeated at will.



# Administration Module KSA-DV

## Processing of orders

- Processing of main orders and scheduled orders
- Processing of orders according to the article allocation table
- Selection of orders from the article allocation table
- Reprint of delivery notes
- The order list can be displayed or printed.
- Deletion of orders after termination: selected separately or after an adjustable time period (max. 9,999 days)

## Recipe administration

- Recipe input with sort, components, set values etc.
- Overrun correction related to the recipe
- Forerun correction related to the recipe, to guarantee an equal distribution of the material

## Master data administration

- Administration of client addresses with name, location, street, telephone, remarks and lock indicators, available by customer number or search word
- Administration of building site data with correlation to the customer
- Administration of the vehicle data including loading quantity, licence plate number, drivers' names, administration of chambers etc.

## Statistics

- All statistics can be output with any time frame
- Loading statistics with comparison of set values / actual values and difference equation
- Customer statistics, building site statistics, vehicle statistics
- Loading protocols: selection of every single loading process with order information and all dosed components with set quantity and total actual quantity
- LOG File – All processes of the system are recorded and stored in a LOG file.
- This LOG file can be displayed and printed.

## Additional Features

- Password protection: You can save an individual password for every user.
- You can unlock the single programme parts for every user.
- Revision of delivery notes
- Printout of protocols from the data base: It is not necessary to have a protocol printer running simultaneously.
- All protocols can be stored on external data media: CD-ROM, USB stick, network server
- Change languages by pushing one button (if delivered in a foreign language)
- Recording of all operating functions and system errors for later analysis of the equipment
- Modern user interface based on Windows 7
- Data transmission
- Data export in ASCII or Excel format for later data preparation with Excel
- SQL Server
- Data backup on CD-ROM, USB stick or network

**Auftragsverwaltung** Status: zu produzieren

**Kundendaten**  
Nr.: 11216  
Name: HEIDELBERGER MAXIT  
Strasse: KULHERTSTRASSE 35  
PLZ / Ort: 79306 BREISACH  
Kundenabst.: 0,00 € kundenskonto: 0,00 €

**Baustellen**  
Nr.: 1  
Bezeichnung: LAGER WEISNAU  
auftragne:  
Bezeichnung 3:  
Strasse:  
PLZ / Ort:

**Rechnungsdaten**

	Preis/Stk	MwST:	%
	0,00 €	1,00	%
	0,00 €	MwSt Betrag:	0,00 €
	0,00 €	Skonto:	1,00 %
	0,00 €	Gesamt:	0,00 €

**Info**  
Bestellzeit: [24.12.10] [24.12.10] [24.12.04]  
[05.06.2007] [05.06.2007] [05.06.2007]  
Hinweis:  
Verladart: 1 = Lose 2 = Stückware

**Gesamtmenge**  
Lose Verladung  
Soll (kg): 29000  
Ist (kg): 29500  
Ladegewicht (kg): 29500

**Fahrzeugdaten**  
Nr.: 711  
Fahrzeug: EICHHORN  
Führer: Peter Bött  
Kennzeichen: MKK-KK-140  
Leergewicht: 0 kg  
max. Zuladung: 0 kg  
zul. Gesamtgewicht: 0 kg  
Anzahl Kammer: 2  
Gewicht Kammer 1: 14500 kg  
Gewicht Kammer 2: 14000 kg  
Gewicht Kammer 3: 0 kg  
Führer Nr.: 26  
Führer Name: EICHHORN  
Transportart: 0 (0 = Abholung, 1 = Zufuhr, 2 = Stück)

**Rezept-/Artikeldaten**  
Nr.: 4000  
Bezeichnung: MAXIT RQ30  
Preis/to: 2,000 € (nur Lose Verladung)

**Werbetext**

Buttons: Neu, Speichern, Drucken, Löschen, Auftrag verladen, Schließen

**Verladeprotokoll vom 01.06.2007 06:40:02**

**Verladedaten**  
Rezeptbez.: DAW141  
Rezeptnummer: 2200  
Ges. Menge (kg): 29500  
Verladart: 1  
Zeit bestellt: 06:29:07  
Zeit Verladung Start: 06:29:09  
Zeit Verladung Ende: 06:40:02  
(1=Lose, 2=Stückware)

**Auftragsdaten**  
Auftrag: 1393  
Kunden-Nr.: 10311  
Baustellen-Nr.: 1  
Kunde: DEUTSCHE AMPHIBOLIN WERKE  
Baustelle: LAGER  
Lieferschein-Nr.: 1479  
Sollmenge (kg): 29000,00  
Istmenge (kg): 29300,00

**Fahrzeugdaten**  
Fahrzeug-Nr.: 45  
Bezeichnung: PETRI  
Kennzeichen: WW-P-527  
Fahrername: Michael Butler  
Leergewicht (kg): 0,00  
max. Zuladung (kg): 0,00  
zul. Gesamtgewicht (kg): 0,00  
Anzahl Kammer: 2  
Gewicht Kammer 1 (kg): 16950,00  
Gewicht Kammer 2 (kg): 12400,00  
Gewicht Kammer 3 (kg): 0,00

**Zuschlag**

Sorte	Stk-Nr	Stk (kg)	Bemerkung
RQ20F	1	40	
RQ20	2	50	
RQ30	3	40	
RQ24F	4	40	
RQ24	5	60	
RQ8	9	250	
	0		
	0		
	0		
	0		

Buttons: Daten exportieren, Drucken, Schließen

## Recovery Set

To restore all Bikotronic software packages and databases easily. The recovery can be managed by the customer without any problems. The Recovery Set consists of:

- Bikotronic Boot CD and Recovery DVD to restore all Bikotronic software packages
- Acronis TrueImage software package with manual
- USB stick as storage medium

## Remote Maintenance KSA

Through this connection, all functions of the plant can be tested, accepted or changed.

- Through ISDN, network and internet
- Remote maintenance software

## Remote Maintenance PLC

Through this connection, all functions of the PLC can be tested, edited, changed and transmitted online.

- Through ISDN, network and internet
- Remote maintenance software

## Spare Parts Provision

The computers of the KSA system are based on standard industry computer hardware. Thus a fast and easy spare parts provision is ensured by standardized PC components.

